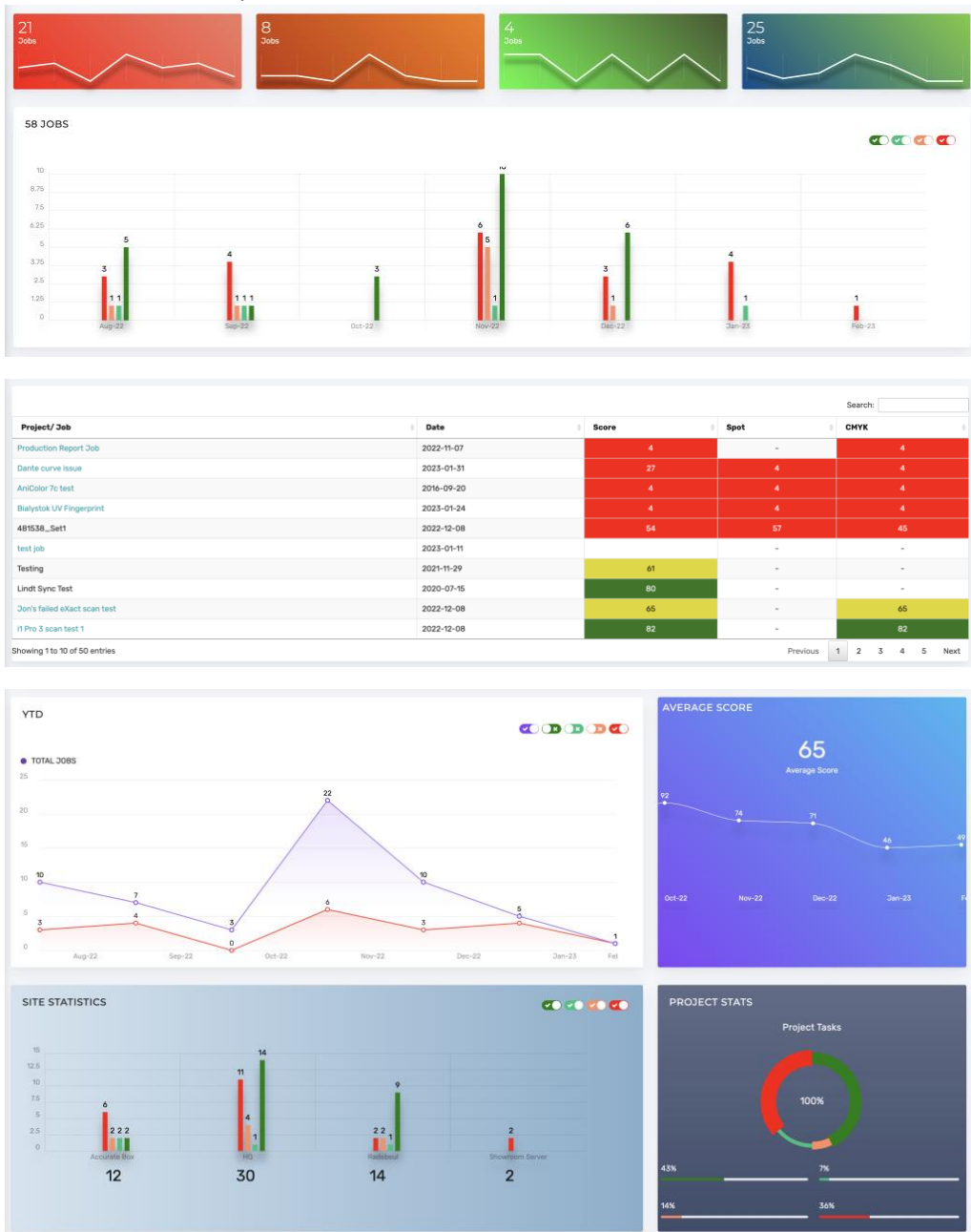
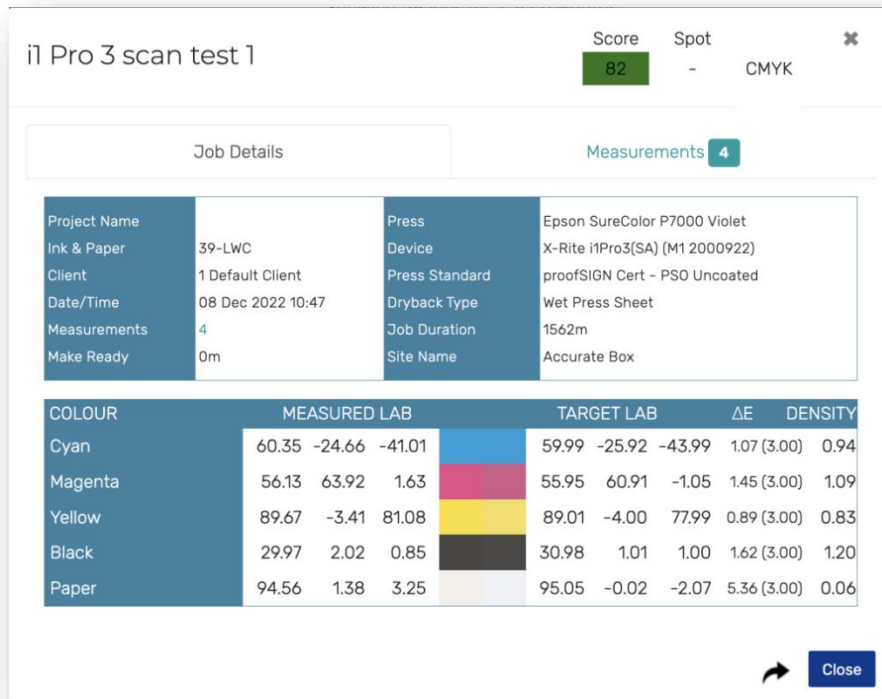


Live Dashboard

pressSIGN GPM subscribers can publish their print quality scores via a web server so that any remote users can track their performance.





PDF Reports

All pressSIGN users can generate PDF reports of a single measurement, or the average of many, using the default “proofSIGN Certification”, “Measurement Report” and “Summary Report” layouts showing the key performance indicators selected in the job, such as colour difference, TVI graphs, grey balance and their scores etc. Or you can create your own custom report layout including only what you want to show.

Trends or Pro client licenses offer managers a deeper understanding of the performance of their printing devices and operators with “Production Reports” for either an individual job, all jobs within a project, for a selected category or over a specified period of time. Compare the performance of;

- presses
- targets
- operators
- shifts
- clients
- consumables
- categories

Or any other metadata for which you want to track KPIs using the Job Data field which, once added, can be used to search for jobs in the database.

Bodoni Systems Ltd (HQ)

Job | eXact Scan Test 001
 Project | Testing
 Date | 9th November 2022
 Time | 14:13:44



Bodoni Systems
 the colour experts

Bodoni Systems
 the colour experts

Job information

Job name	eXact Scan Test 001
Project	Testing
Printed by	Bodoni Systems Ltd (HQ)
Press	Generic Press(Front)
Ink & Paper	Generic Uncoated/Finished press sheet
Device	K-Rite eXact (029652 MD)
Date / Time	9th November 2022 14:13:44
Client	1 Default Client
Measurements	1 measurement
Press Standard	ISO 12647-2 Coated White Backing v6
Grey Balance	ISO 12647-2 Paper Type 1/2 White Backing
Widen	350
Wedge Angle	60°
Wedge Pressure	200
Opaque	white ink
Resolution	600
Pass Number	6

Scoring

	SCORE	GRADE
CMYK Primaries (10/20)		●
Paper (6/6)		●
Secondaries (3/3)		●
Trapping (2/2)		●
Dot Gain (TV) (24/28)		●
Sumul Volume (865/13168)	65.70%	

Legend: ● 80% (Green), ● 70% (Yellow), ● 60% (Orange), ● Fail (Red)

61%

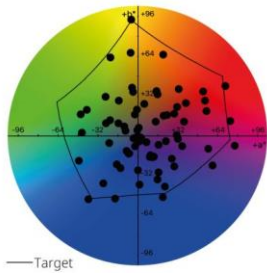
Report generated by pressSIGN version 11.2.2.11331 Bodoni Systems Ltd © 2022

Lab Density

Lab..._D50_2° Observer_Density measured (Data T Absolute)

COLOUR	MEASURED LAB	TARGET LAB	SE	ΔE*	Δa*	DENSITY
Cyan	59.07 -39.32 -51.14	55.00 -37.00 -50.00	4.82	4.8 (5.0)	1.2	1.42 C
Magenta	48.57 78.20 -8.08	48.00 74.00 -3.00	6.62	6.6 (5.0)	4.8	1.84 M
Yellow	88.00 -4.96 93.16	89.00 -5.00 93.00	1.02	1.0 (5.0)	0.0	1.01 Y
Black	23.28 2.31 -1.50	16.00 0.00 0.00	7.78	7.8 (5.0)	-2.8	1.41 K
Paper	94.34 1.96 -4.37	94.00 0.00 -2.00	3.09	3.1		0.07 K
Red(R) Overprint	49.90 70.69 39.74	47.00 68.00 48.00	9.16	9.2 (6.0)	84 (85 %)	1.83 M
Green(G) Overprint	86.99 -3.14 -2.19	50.00 45.00 37.00	77.76	77.8 (6.0)	1 (99 %)	0.17 C
Blue(B) Overprint	28.25 20.38 -49.49	24.00 22.00 -46.00	5.73	5.7 (6.0)	89 (90 %)	1.25 M

Overprint Trap (Tolerance)



Report generated by pressSIGN version 11.2.2.11331 Bodoni Systems Ltd © 2022

TVI - Tonal Value Increase



Report generated by pressSIGN version 11.2.2.11331 Bodoni Systems Ltd © 2022

Calibration Curves

Measured Tint Data

DOT	C	M	Y	K
0%	0.0%	0.0%	0.0%	0.0%
2%	3.0%	3.0%	3.4%	3.7%
5%	7.6%	7.6%	8.5%	8.5%
10%	14.9%	15.3%	16.3%	15.3%
20%	28.3%	30.8%	29.0%	29.3%
25%	34.4%	38.0%	34.6%	36.1%
30%	40.3%	44.5%	40.2%	42.2%
40%	51.3%	55.6%	51.2%	52.7%
50%	62.0%	65.6%	62.0%	62.2%
60%	72.4%	75.6%	72.3%	71.9%
70%	81.8%	84.4%	81.4%	81.9%
75%	85.9%	88.2%	85.3%	85.7%
80%	89.4%	91.4%	88.9%	89.7%
90%	95.2%	96.2%	94.8%	96.1%
95%	97.6%	98.2%	97.4%	98.3%
100%	100.0%	100.0%	100.0%	100.0%

Target Tint Data

DOT	C	M	Y	K
0%	0.0%	0.0%	0.0%	0.0%
2%	2.8%	2.8%	2.8%	3.2%
5%	7.0%	7.0%	7.0%	8.0%
10%	14.0%	14.0%	14.0%	15.6%
20%	27.6%	27.6%	27.6%	30.2%
25%	34.3%	34.3%	34.3%	37.1%
30%	40.7%	40.7%	40.7%	43.7%
40%	53.0%	53.0%	53.0%	56.0%
50%	64.3%	64.3%	64.3%	67.0%
60%	74.5%	74.5%	74.5%	76.6%
70%	83.4%	83.4%	83.4%	84.9%
75%	87.3%	87.3%	87.3%	88.4%
80%	90.7%	90.7%	90.7%	91.5%
90%	96.3%	96.3%	96.3%	96.6%
95%	98.4%	98.4%	98.4%	98.5%
100%	100.0%	100.0%	100.0%	100.0%

Report generated by pressLab version 11.2.11.131 Bodoni Systems Ltd © 2023

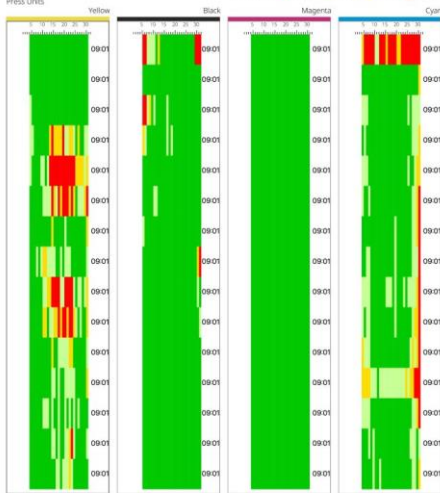
Single Patches

COLOUR	MEASURED LAB	TARGET LAB	ΔE METHOD
40.0% Cyan, 40.0% Magenta, 70.0% Yellow	61.05 5.55 25.33	59.86 6.11 28.05 2.38	ΔEab
25.0% Black	79.98 0.02 -4.77	79.44 -0.26 -2.19 2.78	ΔEab
10.0% Black	88.77 1.16 -8.80	88.97 -0.00 -1.85 1.02	ΔEab
Blue(C-M) Overprint	28.25 20.38 49.49	24.00 22.00 -46.00 5.73 6.00	ΔEab
3.0% Black	92.64 1.56 -4.42	93.20 -0.00 -1.96 0.39	ΔEab
70.0% Cyan, 40.0% Yellow, 40.0% Black	51.82 22.07 -6.03	46.94 -25.81 -4.50 5.72	ΔEab
Solid Black	23.28 2.31 -1.50	16.00 0.00 0.00 7.78 5.00	ΔEab
50.0% Cyan, 50.0% Magenta	57.58 16.92 -29.63	55.85 13.09 -28.09 3.51	ΔEab
Solid Cyan, 40.0% Magenta	47.38 -17.88 -50.65	43.94 -17.03 -48.62 4.92	ΔEab
Solid Magenta, Solid Yellow, 80.0% Black	25.51 23.76 16.39	19.01 23.58 16.63 6.80	ΔEab
75.0% Magenta	59.55 56.84 -30.60	58.21 55.13 -5.51 5.53	ΔEab
70.0% Cyan, Solid Yellow, 40.0% Black	49.94 -25.51 31.10	44.73 -31.50 33.37 7.52	ΔEab
50.0% Yellow	91.05 -4.34 38.54	91.68 -3.89 41.13 2.70	ΔEab
Solid Cyan, 80.0% Black	25.19 -18.63 -23.21	20.32 -16.71 19.64 5.28	ΔEab
10.0% Cyan, 40.0% Magenta, 40.0% Yellow	71.42 21.09 15.88	71.22 18.85 17.25 1.33	ΔEab
Solid Cyan, Solid Magenta, Solid Yellow, Solid Black	15.50 1.16 6.28	8.71 -0.07 2.06 8.51	ΔEab
20.0% Cyan, 70.0% Magenta, 70.0% Yellow	54.59 38.92 26.00	53.09 37.72 28.90 2.51	ΔEab
40.0% Cyan, 70.0% Magenta, 40.0% Yellow	50.19 32.44 -2.82	48.42 29.07 -0.83 3.31	ΔEab
Solid Cyan, Solid Magenta, 80.0% Black	17.76 10.49 -14.80	11.53 -0.07 15.67 6.54	ΔEab
Solid Magenta, 80.0% Black	24.92 31.48 0.43	18.88 29.40 -0.22 6.07	ΔEab
40.0% Cyan, 40.0% Magenta, 10.0% Yellow	64.34 12.16 -17.53	63.23 8.95 -17.27 3.07	ΔEab
Red(M+V) Overprint	49.90 70.69 39.74	47.00 68.00 48.00 0.16 6.00	ΔEab
75.0% Cyan, 75.0% Yellow	62.76 -40.63 -20.67	59.93 -44.01 23.54 4.00	ΔEab
Paper	94.34 1.96 -4.37	94.00 0.00 -2.00 3.09	ΔEab
Solid Cyan, Solid Magenta, 40.0% Black	22.01 16.14 -35.35	18.22 15.78 -32.73 4.38	ΔEab
75.0% Cyan, 75.0% Magenta	40.80 22.12 -40.93	37.46 19.00 -38.39 4.52	ΔEab
40.0% Cyan, 10.0% Magenta, 10.0% Yellow	73.63 7.18 -34.50	72.45 -8.18 -15.68 3.05	ΔEab
Solid Cyan, Solid Yellow, 80.0% Black	24.38 -25.26 9.87	20.59 -25.97 9.34 4.24	ΔEab
40.0% Cyan, 70.0% Yellow, 40.0% Black	58.88 -14.93 27.97	54.63 -16.34 28.46 4.92	ΔEab
70.0% Cyan, Solid Magenta, 40.0% Black	28.39 29.52 -24.88	22.28 28.64 -25.32 6.59	ΔEab
10.0% Cyan, 7.5% Magenta, 7.5% Yellow	86.69 0.86 -3.83	87.80 -0.25 -2.37 1.60	ΔEab
75.0% Cyan	67.64 27.37 -38.34	64.82 -26.96 -39.03 2.93	ΔEab
50.0% Magenta, 50.0% Yellow	68.94 31.78 22.95	68.92 30.50 26.95 2.25	ΔEab
Solid Magenta, 40.0% Yellow	47.91 74.52 11.63	47.74 71.20 16.24 4.11	ΔEab
10.0% Cyan, 40.0% Magenta, 10.0% Yellow	52.01 19.29 18.84	49.30 18.93 11.22 3.27	ΔEab
10.0% Cyan, 10.0% Magenta, 40.0% Yellow	83.02 -0.34 20.86	84.56 -1.07 23.94 1.53	ΔEab
75.0% Black	46.47 2.21 -3.02	41.39 -0.59 -1.17 6.09	ΔEab
Solid Magenta	48.57 78.20 -8.08	48.00 74.00 -3.00 6.00 5.00	ΔEab
80.0% Black	32.01 0.83 -3.46	35.69 -0.00 -0.07 5.66	ΔEab
10.0% Cyan	91.04 -1.84 -8.58	91.48 -2.97 -6.56 1.29	ΔEab
40.0% Magenta, 70.0% Yellow, 40.0% Black	55.40 16.09 33.05	52.73 14.42 33.68 3.36	ΔEab
Solid Cyan	59.07 39.32 -51.14	55.00 -37.00 -50.00 4.82 5.00	ΔEab

Report generated by pressLab version 11.2.11.131 Bodoni Systems Ltd © 2023

Production Mode

Front

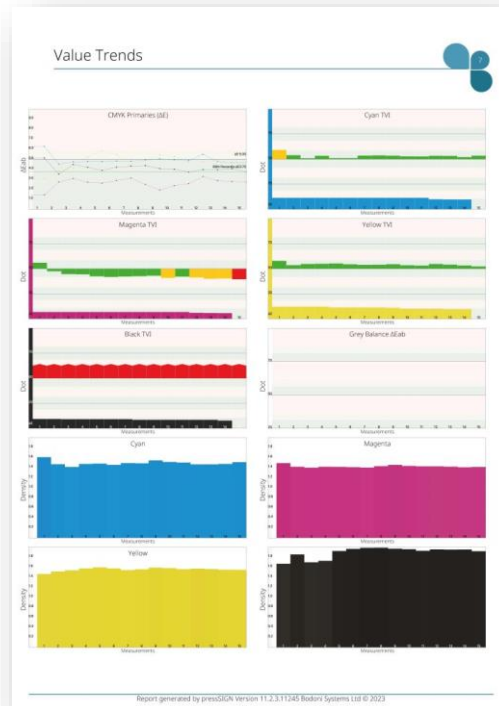


Report generated by pressLab version 11.2.11.131 Bodoni Systems Ltd © 2023

Measurements

Measurement	Lab/Print	Peak	Gain/Offset	ΔE	ΔEab	ΔEbc	ΔEab
1 - Sheet 1 1 - 2710-105-2710-130 13	1403/2022 0801	73%	(0.00)	(6/1)	(6/6)	(15/20)	(15/20)
1 - Sheet 1 1 - 2710-105-2710-130 13	1403/2022 0801	89%	(0.00)	(6/1)	(6/6)	(15/20)	(15/20)
1 - Sheet 1 1 - 2710-105-2710-130 13	1403/2022 0801	92%	(0.00)	(6/1)	(6/6)	(15/20)	(15/20)
1 - Sheet 1 1 - 2710-105-2710-130 13	1403/2022 0801	70%	(0.00)	(6/1)	(6/6)	(15/20)	(15/20)
1 - Sheet 1 1 - 2710-105-2710-130 13	1403/2022 0801	67%	(0.00)	(6/1)	(6/6)	(15/20)	(15/20)
1 - Sheet 1 1 - 2710-105-2710-130 13	1403/2022 0801	70%	(0.00)	(6/1)	(6/6)	(15/20)	(15/20)
1 - Sheet 1 1 - 2710-105-2710-130 13	1403/2022 0801	73%	(0.00)	(6/1)	(6/6)	(15/20)	(15/20)
1 - Sheet 1 1 - 2710-105-2710-130 13	1403/2022 0801	73%	(0.00)	(6/1)	(6/6)	(15/20)	(15/20)
1 - Sheet 1 1 - 2710-105-2710-130 13	1403/2022 0801	70%	(0.00)	(6/1)	(6/6)	(15/20)	(15/20)
1 - Sheet 1 1 - 2710-105-2710-130 13	1403/2022 0801	66%	(0.00)	(6/1)	(6/6)	(15/20)	(15/20)
1 - Sheet 1 1 - 2710-105-2710-130 13	1403/2022 0801	77%	(0.00)	(6/1)	(6/6)	(15/20)	(15/20)
1 - Sheet 1 1 - 2710-105-2710-130 13	1403/2022 0801	68%	(0.00)	(6/1)	(6/6)	(15/20)	(15/20)
1 - Sheet 1 1 - 2710-105-2710-130 13	1403/2022 0801	72%	(0.00)	(6/1)	(6/6)	(15/20)	(15/20)
1 - Sheet 1 1 - 2710-105-2710-130 13	1403/2022 0801	72%	(0.00)	(6/1)	(6/6)	(15/20)	(15/20)
1 - Sheet 1 1 - 2710-105-2710-130 13	1403/2022 0801	72%	(0.00)	(6/1)	(6/6)	(15/20)	(15/20)

Report generated by pressLab version 11.2.11.131 Bodoni Systems Ltd © 2023



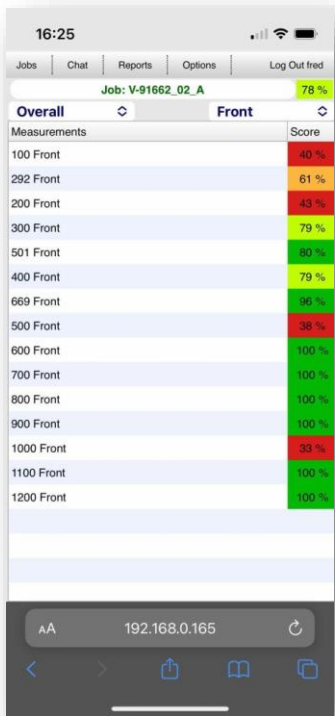
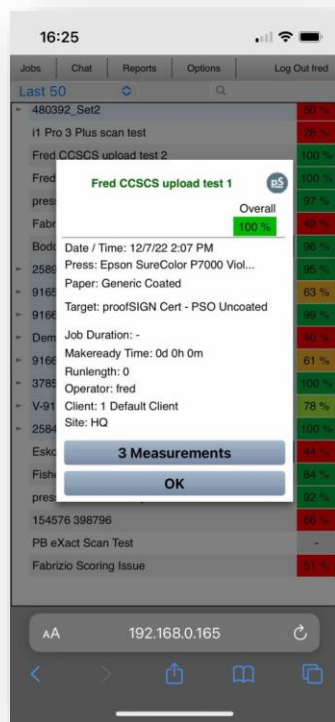
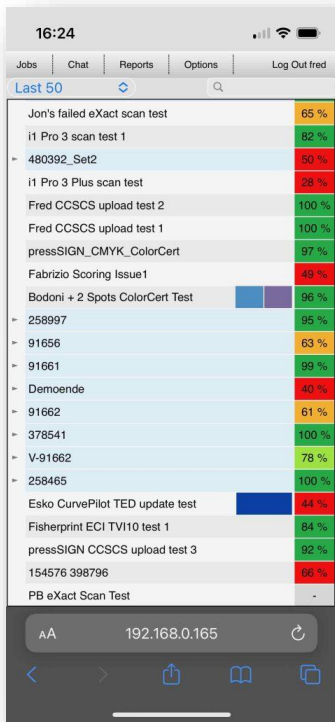
Scheduled Email Reports

Create dynamic reports showing trends, comparisons and ranking. Select all the data from the server or sort by any criteria and generate reports.

Frequently used database searches can be saved by all users, which our GPM subscription licensees can then schedule to automatically email the latest report, as either HTML or a PDF, to any of their key stakeholders.

Web Reports

The free pressSIGN Mobile client allows an unlimited number of users to access the print quality scores via a web browser on their computer or smartphone, especially useful for non-technical users who may not understand ΔE or TVI etc, such as in sales, customer services or even your customers who just want to know if the score was good and have confidence that the job conforms to the agreed press target.



The Web Reports interface shows the overall performance of the jobs in the database, or the results of a search query, using pie charts, tables, scatter graphs and histograms to simplify and expedite the analysis process.

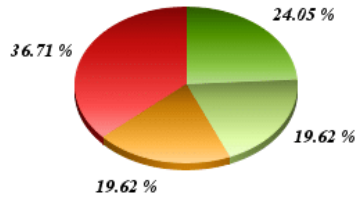
All Jobs

9/25/12 4:13 PM

Overall

158 Total Jobs

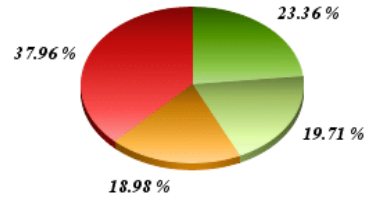
- 38 Jobs
- 31 Jobs
- 31 Jobs
- 58 Jobs



Last 1 Year

137 Total Jobs

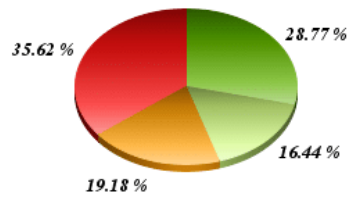
- 32 Jobs
- 27 Jobs
- 26 Jobs
- 52 Jobs



Last 8 Months

73 Total Jobs

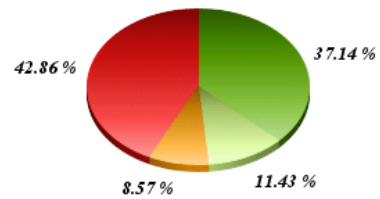
- 21 Jobs
- 12 Jobs
- 14 Jobs
- 26 Jobs



Last 4 Months

35 Total Jobs

- 13 Jobs
- 4 Jobs
- 3 Jobs
- 15 Jobs



Performance / Ranking

9/25/12 4:18 PM

Ranking	Printer Name	Average	Total Jobs
1	Presssign Demo Server	69 %	5
2	Flackwell	64 %	19
3	V4 Presssign Demo Server	62 %	133
4	Sims	60 %	1

